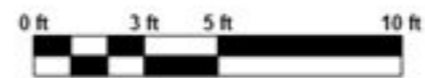
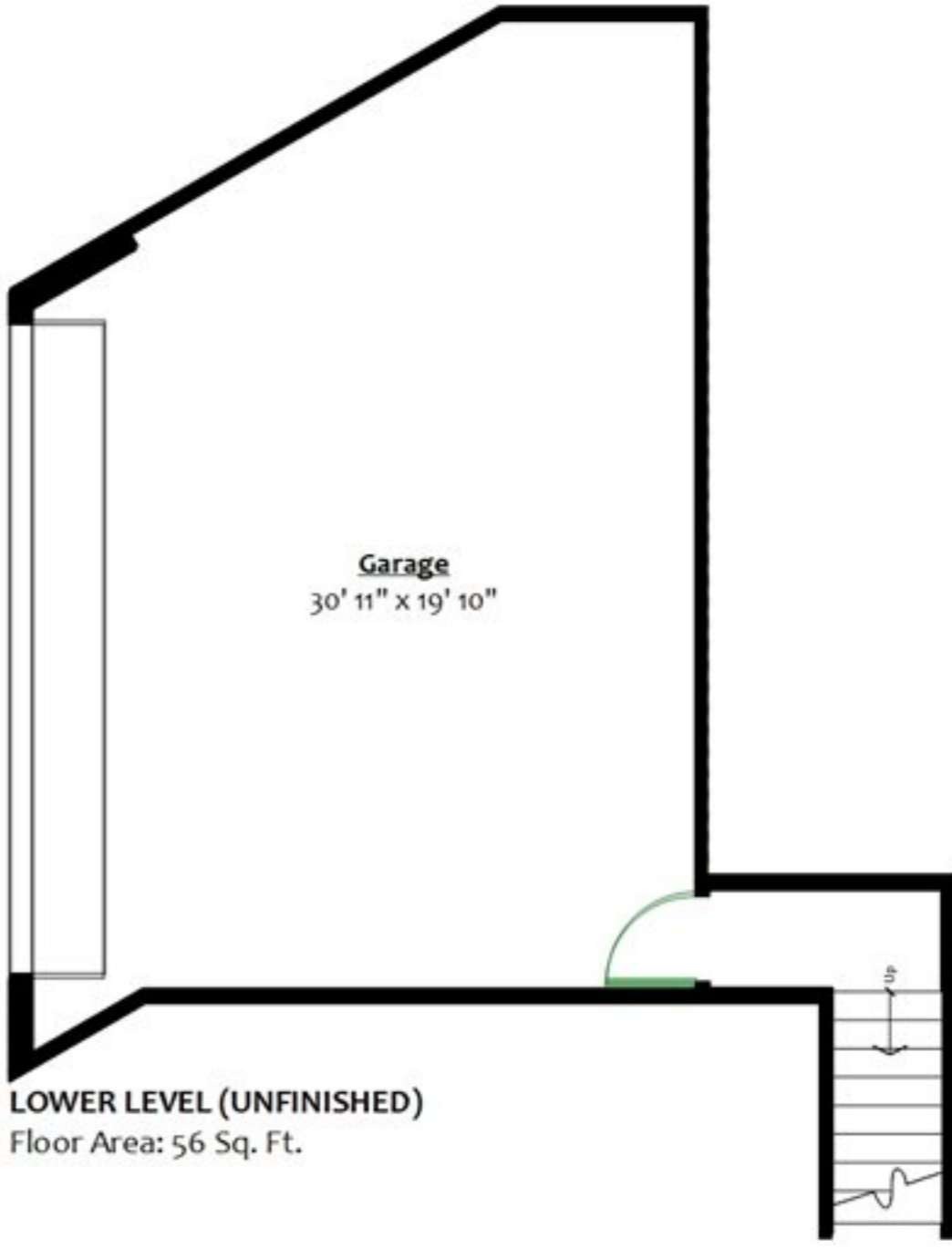
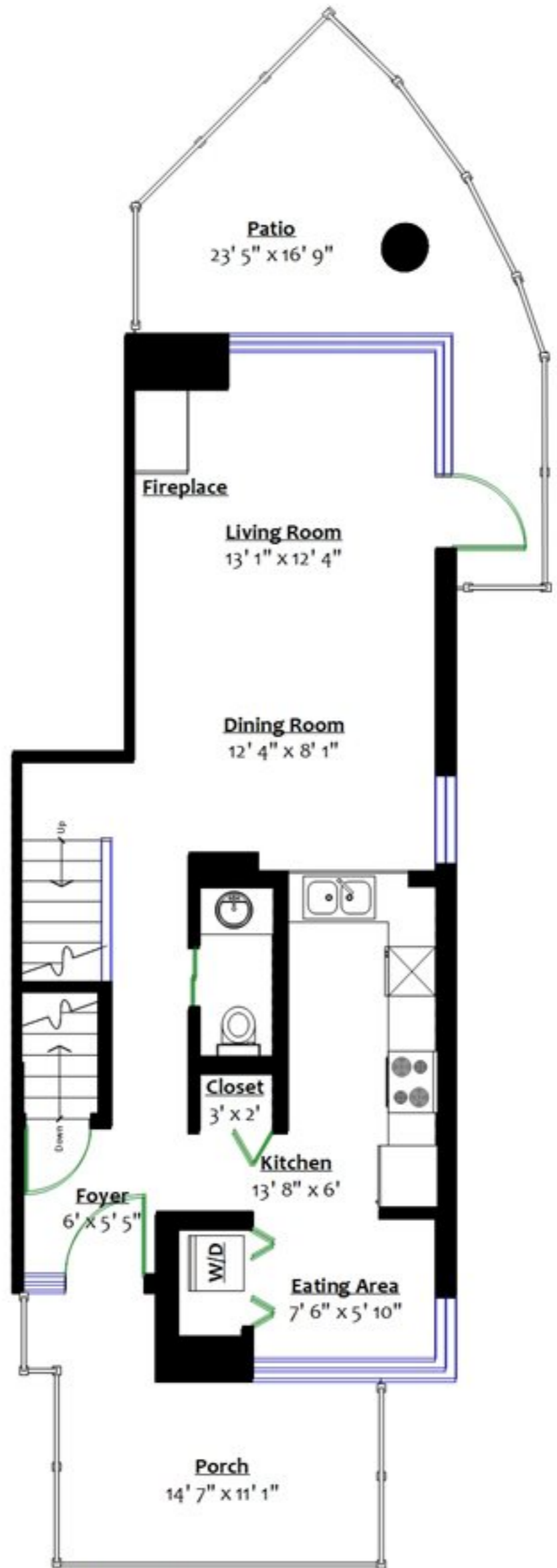
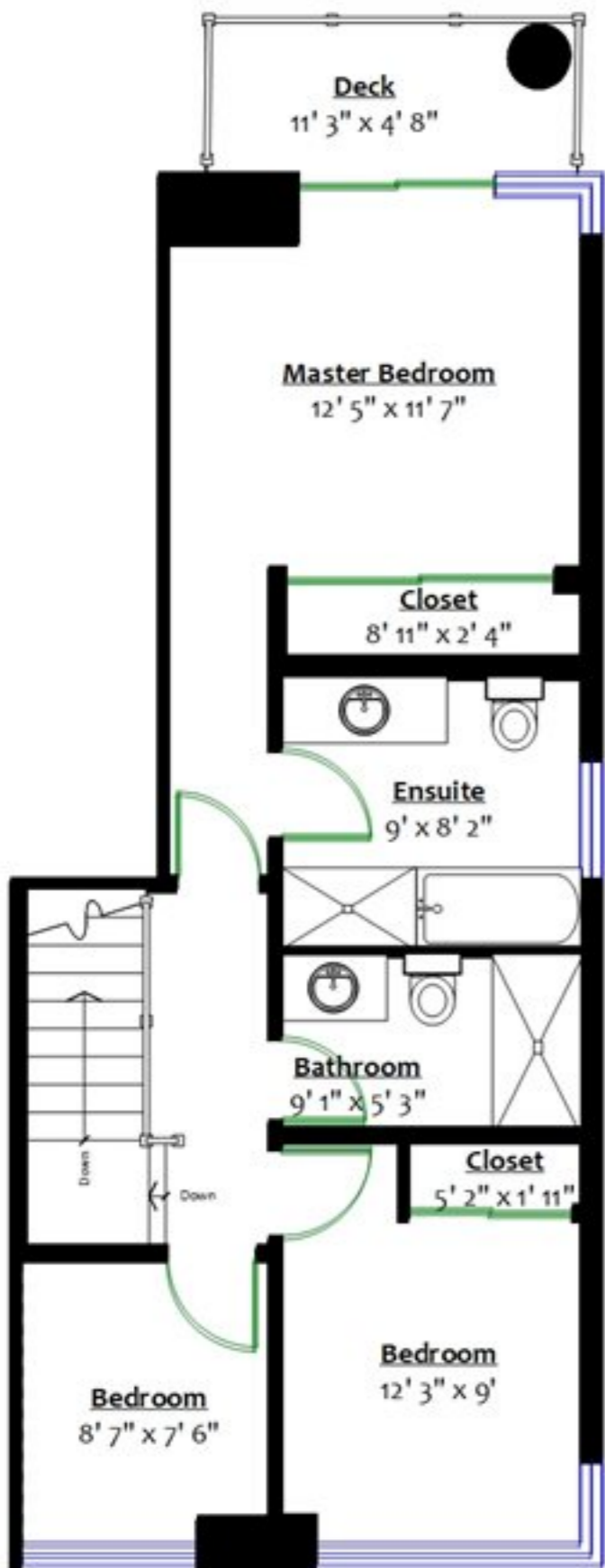


# TH 119-138 Drake Street, Vancouver, B.C.

**Totals\*\***

Main Level:	667 sq. ft.	Garage:	559 sq. ft.
Upper Level:	659 sq. ft.	Porch:	118 sq. ft.
Total (fin.):	1,326 sq. ft.	Patio:	175 sq. ft.
Lower Level (UF):	56 sq. ft.	Deck:	52 sq. ft.
Grand Total:	1,382 sq. ft.	Total:	904 sq. ft.



\*\* Approx. based on interior measurements to exterior walls  
\*\* Total square footage not taken from original blueprints